

PR



PACTware

Installation Instructions
&
Quick Guide

SIGNALS THE BEST

- DK** ▶ PR electronics A/S tilbyder et bredt program af analoge og digitale signalbehandlingsmoduler til industriel automation. Programmet består af Isolatorer, Displays, Ex-barrierer, Temperaturtransmittere, Universaltransmittere mfl. Vi har modulerne, du kan stole på i selv barske miljøer med elektrisk støj, vibrationer og temperaturudsving, og alle produkter opfylder de strengeste internationale standarder. Vores motto »Signals the Best« er indbegrebet af denne filosofi – og din garanti for kvalitet.
- UK** ▶ PR electronics A/S offers a wide range of analogue and digital signal conditioning modules for industrial automation. The product range includes Isolators, Displays, Ex Interfaces, Temperature Transmitters, and Universal Modules. You can trust our products in the most extreme environments with electrical noise, vibrations and temperature fluctuations, and all products comply with the most exacting international standards. »Signals the Best« is the epitome of our philosophy – and your guarantee for quality.
- FR** ▶ PR electronics A/S offre une large gamme de produits pour le traitement des signaux analogiques et numériques dans tous les domaines industriels. La gamme de produits s'étend des transmetteurs de température aux afficheurs, des isolateurs aux interfaces SI, jusqu'aux modules universels. Vous pouvez compter sur nos produits même dans les conditions d'utilisation sévères, p.ex. bruit électrique, vibrations et fluctuations de température. Tous nos produits sont conformes aux normes internationales les plus strictes. Notre devise »SIGNALS the BEST« c'est notre ligne de conduite - et pour vous l'assurance de la meilleure qualité.
- DE** ▶ PR electronics A/S verfügt über ein breites Produktprogramm an analogen und digitalen Signalverarbeitungsmodulen für die industrielle Automatisierung. Dieses Programm umfasst Displays, Temperaturtransmitter, Ex- und galvanische Signaltrenner, und Universalgeräte. Sie können unsere Geräte auch unter extremen Einsatzbedingungen wie elektrisches Rauschen, Erschütterungen und Temperaturschwingungen vertrauen, und alle Produkte von PR electronics werden in Übereinstimmung mit den strengsten internationalen Normen produziert. »Signals the Best« ist Ihre Garantie für Qualität!

PACTware

Installation instructions	2
Installing .NET Framework.....	2
Installing PACTware 4.0	2
PACTware 4.0 Quick guide.....	3
1 How to add/remove a communication protocol.....	3
2 How to add/remove a device to a communication protocol..	5
3 Connect and disconnect protocols and devices.....	7
4 Saving a project.....	8

NB.: Click on the entries in the table of contents to go to the desired section.

INSTALLATION INSTRUCTIONS

Important information!: Please follow these instructions before downloading and installing **PACTware 4.0**

PACTware 4.0

Before installing **PACTware 4.0**, you must install .NET Framework 2.0 or later depending on your operating system. The .NET Framework is a component of the Microsoft Windows® operating system used to build and run Windows-based applications such as **PACTware**. It is therefore important to install .NET Framework before installing **PACTware**.

Installing .NET Framework

To install .NET Framework, do the following:

1. Look for the version of .NET Framework on Microsoft's .NET Framework Developer Centre that is compatible with your operating system. Note that the version must be .NET Framework 2.0 or later.
2. Download the .NET Framework and place it in a directory of your choice
3. Double click the downloaded file and follow the installation instructions

Installing PACTware 4.0

After installing the .NET Framework, then install **PACTware 4.0**:

1. Download **PACTware 4.0** from **www.prelectronics.com**
2. Unzip the file to the chosen directory
3. Double click the setup.exe to install and follow the installation instructions

PACTware 4.0 QUICK GUIDE

This guide gives you a short tour of PACTware and shows you the basics of what you need to know to get started.

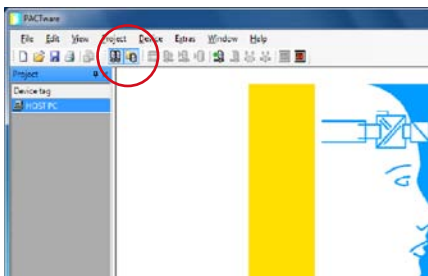
The following topics will be covered:

1. How to add/remove a communication protocol
2. How to add/remove a device to a communication protocol
3. Connect and disconnect protocols and devices
4. Saving a project

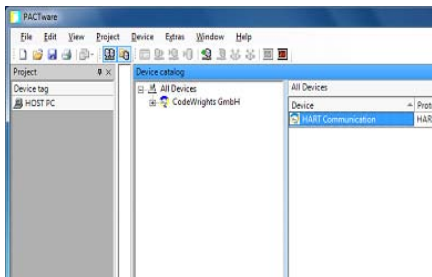
1 How to add/remove a communication protocol

In order to communicate with a device you need to install the type of communication protocol that the device requires. There are two ways to add a communication protocol:

The first way is to click the Device catalogue menu button



Then the following dialogue appears:

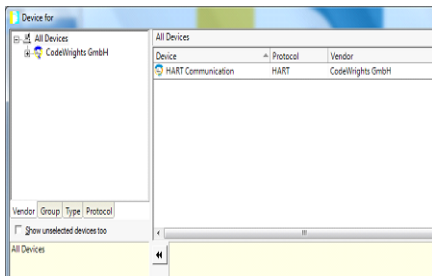


When you start PACTware the first time, this dialogue box does not contain any protocols or devices. To see the protocols and devices installed on your computer, click the Update Device Catalogue button. You should press the Update Device Catalogue button every time you have installed or uninstalled either a communication DTM or device DTM, to reflect what is currently installed on your computer.

To add a protocol, you click the vendor tab in the left panel and then double click the protocol or click Add.

The second way is to right click the HOST PC and chose Add Device from the context menu.

To add a protocol, simply double click the protocol you want to use.



To remove a protocol, you select it and either press the delete button on the keyboard or right click the protocol and chose delete device from the context menu. Any devices added to the protocol will also be removed.

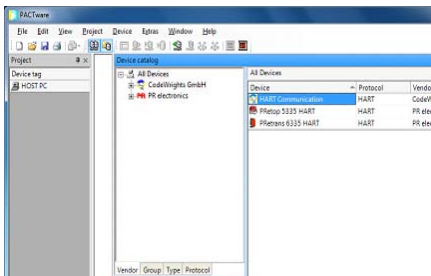
2 How to add/remove a device to a communication protocol

Before adding a device, you must add a communication protocol as previously described. There are two ways to add a device to a communication protocol:

The first way is to click the Device Catalogue Menu button.

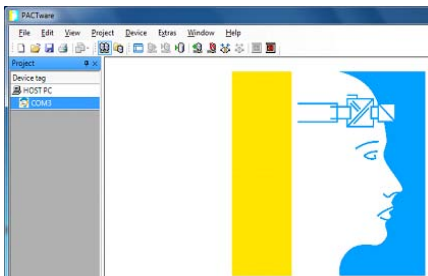


Then the following dialogue appears:

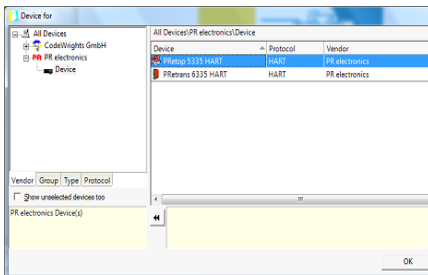


To add a device, you click the vendor tab in the left panel and then double click the device or click Add.

The second way is to right click the protocol where you want to add the device, by selecting Add Device from the context menu.



Then the following dialogue appears:



To add a device, simply double click the device you want to use.

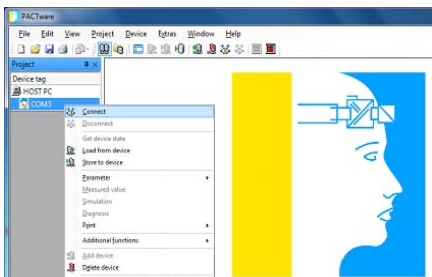
Note: It is possible to add more than one device at the time to the protocol and you can add the same device to the same protocol more than once.

To remove a device from a protocol, you select it and either press the delete button on the keyboard or right click the device and chose delete device from the context menu.

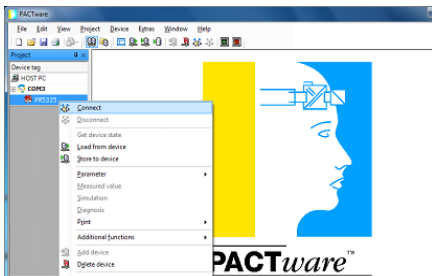
3 Connect and disconnect protocols and devices

After you have added a communication DTM and a device DTM, you need to connect to the protocol or device in order to communicate with them.

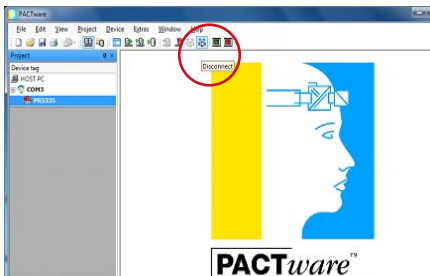
To connect/disconnect a protocol, right click the protocol and choose either Connect or Disconnect from the context menu. When connecting the protocol, only the protocol will be connected. Any of the devices added to the protocol needs to be manually connected. However, when disconnecting a protocol, then any devices added to the protocol will also be disconnected.



To connect/disconnect a device, right click the device and choose either Connect or Disconnect from the context menu. If the protocol is disconnected when the device is being connected, then the protocol will automatically be connected. However, when you disconnect a device, then only the device is disconnected.



If a protocol/device has been properly connected, the disconnect icon will become active.



4 Saving a project

When you have added protocols and devices, you can save your project so you will not have to spend time the next time you want to use these settings again. You can save your project at any given time in File->Save as or Save. Your project can even be empty, that is, no protocols or devices are added.



Displays Programmable displays with a wide selection of inputs and outputs for display of temperature, volume and weight, etc. Feature linearisation, scaling, and difference measurement functions for programming via PReset software.



Ex interfaces Interfaces for analogue and digital signals as well as HART® signals between sensors / I/P converters / frequency signals and control systems in Ex zone 0, 1 & 2 and for some modules in zone 20, 21 & 22.



Isolation Galvanic isolators for analogue and digital signals as well as HART® signals. A wide product range with both loop-powered and universal isolators featuring linearisation, inversion, and scaling of output signals.



Temperature A wide selection of transmitters for DIN form B mounting and DIN rail modules with analogue and digital bus communication ranging from application-specific to universal transmitters.



Universal PC or front programmable modules with universal options for input, output and supply. This range offers a number of advanced features such as process calibration, linearisation and auto-diagnosis.



- 
 www.preelectronics.fr
 sales@preelectronics.fr
- 
 www.preelectronics.de
 sales@preelectronics.de
- 
 www.preelectronics.es
 sales@preelectronics.es
- 
 www.preelectronics.it
 sales@preelectronics.it
- 
 www.preelectronics.se
 sales@preelectronics.se
- 
 www.preelectronics.co.uk
 sales@preelectronics.co.uk
- 
 www.preelectronics.com
 sales@preelectronics.com
- 
 www.preelectronics.org.cn
 sales@preelectronics.org.cn

Head office

Denmark
 PR electronics A/S
 Lerbakken 10
 DK-8410 Rønede

www.preelectronics.com
sales@preelectronics.dk
 tel. +45 86 37 26 77
 fax +45 86 37 30 85



QUALITY SYSTEM AND ENVIRONMENTAL MANAGEMENT SYSTEM
 DS/EN ISO 9001
 DS/EN ISO 14001

